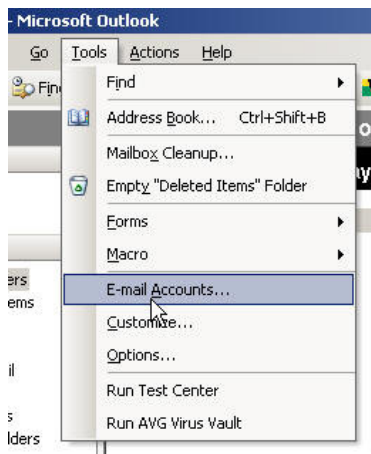


Setup SMTP Authentication in Outlook 2003

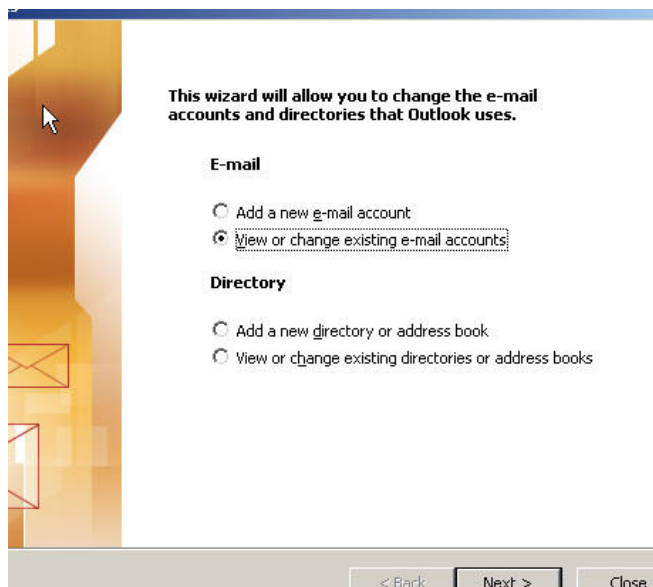
Email

Setup SMTP Authentication in Outlook 2003

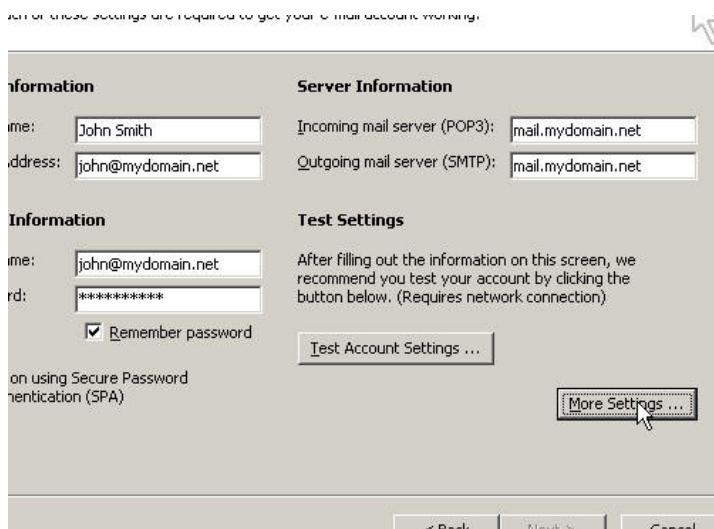
1) From within Outlook 2003, select the menu item "Tools --> E-mail Accounts"



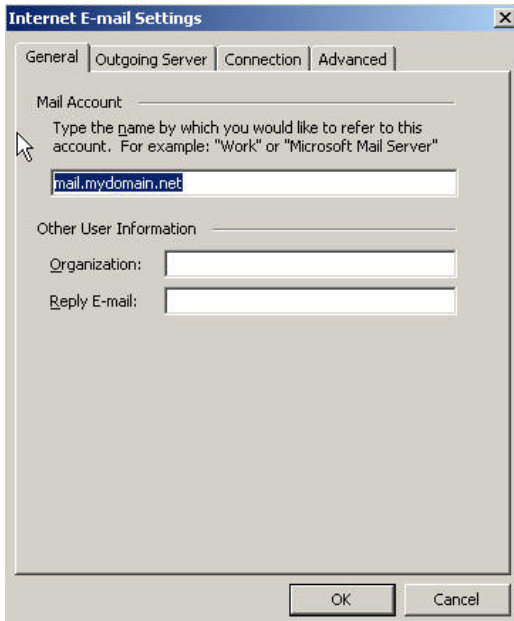
2) The following wizard will appear, select "View or change existing e-mail accounts" and click "Next"



3) The following screen will appear, click "More Settings" button



4) The following screen will appear, click "**Outgoing Server**" tab (the 2nd tab from the left)



4) The following screen will appear, **fill in the values** (following instructions) and click "**OK**"



To enable *SMTP authentication*:

- Check the option: "My Outgoing server (SMTP) requires authentication"
- To use the same values (userid/password) as your POP account select: "Use same settings as my incoming mail server"

5) On the following screen click "**Next**"

Internet E-mail Settings (POP3)

Each of these settings are required to get your e-mail account working.

User Information

Your Name:

E-mail Address:

Server Information

Incoming mail server (POP3):

Outgoing mail server (SMTP):

Logon Information

User Name:

Password:

Remember password

Log on using Secure Password Authentication (SPA)

Test Settings

After filling out the information on this screen, we recommend you test your account by clicking the button below. (Requires network connection)

6) On the following screen click "**Finish**", your done!

You can select an account and change its settings or remove it.

Outlook processes e-mail for these accounts in the following order:

Name	Type
mail.mydomain.net	POP/SMTP (Default)

Deliver new e-mail to the following location: